



# GBC® HeatSeal® Pinnacle 27 Thermal Roll Laminator, NAP I/II, 27" Max. Width, 6 Min Warm-Up

Laminates documents up to 27" wide and is ideal for continuous laminating use.

1701700

## Product Description

The Pinnacle 27 thermal roll laminator with 6 minute warm-up incorporates superior engineering to deliver the highest level of professional lamination quality with easy, intuitive operation. Fully featured control panel keeps you constantly informed of lamination status and helps you pick the correct settings.

## Features

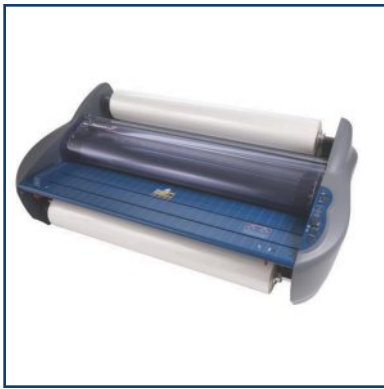
- 6-9 minute warm-up time
- 21" L x 35.5" W x 14.25" H
- Variable speed, laminates up to 12' per minute
- Built-in trimmer, auto reverse, temperature readout and footage counter
- Maximum document width of 27"
- Compatible with NAP I and NAP II roll film up to 3 mil on 1" core
- Uses Heat Shoe Accutherm™ heating technology promising flawless, consistent results
- LED light and audible alert signal warm-up is complete
- Auto standby after 1 hour and shut off after 2 hours of non-use
- Limited 1-year warranty

## Specifications

- **Detailed Color** Blue/Gray
- **Laminating Speed** 12' per minute
- **Laminator Type** Roll
- **Maximum Document Width** 27"
- **Period of Warranty** Limited 1-year
- **Speed Settings** Fixed
- **Thickness (mil)** Up to 3 mil

## Other information

- **Dimensions** 21" x 35.75" x 13.5"
- **Power Requirements** 12V - 60Hz 6.5A



## Each information

Depth	42.5"
Width	27.5"
Height	19"
Gross weight	117.73lbs
UPC#	033816090088
Unit quantity	1

## Case information

Depth	42.5"
Width	27.5"
Height	19"
Gross weight	117.73lbs
UPC#	033816090088
Unit quantity	1

## Shipping Information

Country of origin	CN
Minimum Order Quantity	1
Warranty Period	99
Lowest possible unit	Each

## General information

Color	BLUE/GRAY
Recycled %	0
Layer/Pallet	2
Cases/Layer	1

