

LasscoJog™ LJ-8 Paper Jogger

## USERS MANUAL



Serial Number: \_\_\_\_\_

Date of Purchase: \_\_\_\_\_

Dealer: \_\_\_\_\_

Address: \_\_\_\_\_

\_\_\_\_\_

\_\_\_\_\_

Telephone Number: \_\_\_\_\_

*Before operating this equipment, please read these instructions completely and keep these operating instructions for future reference.*

Lassco Wizer

485 Hague Street, Rochester, NY 14606 U.S.A.

Tel: 585-436-1934

Fax: 585-464-8665

www.lasscowizer.com

info@lasscowizer.com

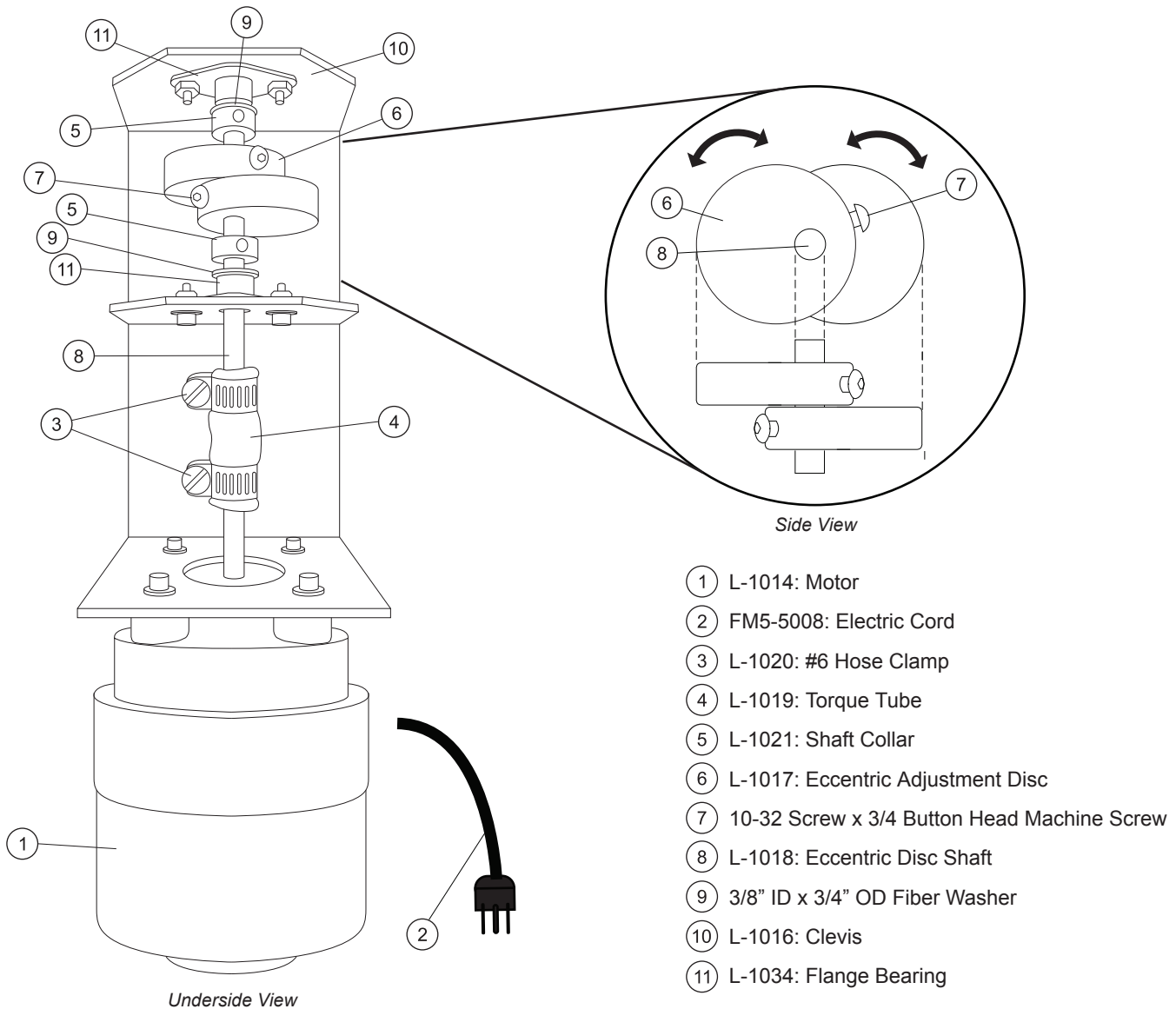
# Instructions

## Setting Up Your Machine

- Your LJ-8 LassoJog Paper Jogger comes ready to use. Simply plug in the power cord and turn on the machine.

## Adjusting the Jogging Speed

- To change the Jogging action, access the adjustment discs on the underside of the machine as shown. Loosen Button Head Machine Screw (7) and rotate one of the Adjustment Discs (6) attached to the Disc Shaft (8) extending from the Motor (1). Tighten down the Machine Screw.



**Note:** When the screws are located opposite each other on the shaft, the minimum action is obtained. When the screws are located on the same side of the shaft, the maximum action is obtained. Normal action is obtained when the screws are 80° to 90° apart.

# Trouble Shooting Guide

<b>Problem</b>	<b>Cause</b>	<b>Correction</b>
Machine does not turn on.	Machine is not plugged in or there is no electricity to the outlet.	Make sure the power cord is connected correctly and that the outlet is live.
	Power switch is faulty.	Contact a service technician to replace the power switch.
	Motor has burned out.	Contact a service technician to replace the motor.
The motor turns on but the machine does not jog as desired.	The Torque Tube (L-1019) has worn out or broken.	Replace the Torque Tube.
	The screw on the Eccentric Adjustment Disc (L-1017) has come loose allowing the disc to shift.	Access the Adjustment Discs and tighten down the screw as shown on page 1.