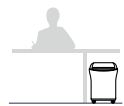


KOBRA 240 SS4 Turbo

CLASSIC LINE SHREDDER
PERSONAL USE AND SMALL/MEDIUM OFFICES



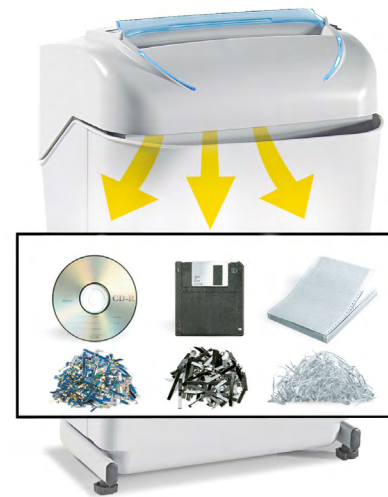
Mode: KOBRA 240 SS4 TURBO
Article Code: 99.706 TURBO
EAN Code: 8 026064 997065



Throat width:	9.5 inch
Shred size:	1/8 inch straight cut
Security level ISO/IEC 21964 (DIN 66399):	P-2 O-2 T-2 E-2
Paper capacity* (sheets at a time):	up to 30 sheets
Shreddable materials:	Paper, Credit cards, Credit cards with chip, CDs/DVDs, Floppy-disks
Waste bag volume:	9.5 gal
Speed:	8 ft/min
Noise level:	55 dB(A)
Voltage:	115 Volt / 60 Hz
Power:	3/4 HP
Dimensions (WxDxH):	14.5 x 13 x 22 inch
Weight:	33 lbs – Packaging: 1 unit per box

Datasheet n.26 rev.0

* Capacity varies on supply power, weight, quality and grain of paper,
operating temperature and blade lubrication



Certifications **CB** **SP** **CE**
C US
Trade Agreement Act (TAA) Compliant

MAIN FEATURES

Straight-cut shredder equipped with heavy duty chain drive system with metal gears. Kobra 240 SS4 TURBO featuring the "Turbo Boost System" for extra-shredding capacity can shred up to 30 sheets in one pass and eliminate paper jams. Carbon hardened cutting knives unaffected by staples and clips.

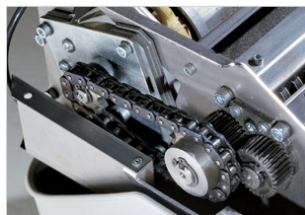
Motor thermal protection: 24 hour continuous duty operations without overheating or duty cycles. Energy Smart System with optical illuminated indicators for power saving stand-by mode and environmental protection. Equipped with a removable waste bin for easy empty operations, does not require lifting of the cutting head.

- **Turbo Boost System:** by pressing the Turbo switch the shredding capacity of the machine is increased by 30%
- **Super Potential Power Unit:** heavy duty chain drive system with steel gears
- **Continuous duty shredding:** 24 hour continuous duty motor without overheating and duty cycles. Motor thermal protection.
- **Carbon hardened steel cutting knives** unaffected by staples and clips
- **Energy Smart System:** power saving stand-by mode with optical illuminated indicators
- **Oil-free System:** no need of lubrication and maintenance of cutting knives
- **Start & Stop:** automatic start and stop through electronic eyes with stand-by function
- **Safety Stop:** automatically stops at bin removal
- **35 litre removable waste bin** for easy empty operations: does not require lifting the cutting head. Equipped with a mechanism to separate shredded paper from plastic shreds. **Eco-friendly:** does not require plastic bags.



24 HOUR CONTINUOUS DUTY MOTOR

Motor thermal protection. Continuous duty motor, no overheating and no duty cycles. Optical illuminated indicators for power saving stand-by mode.



SUPER POTENTIAL POWER UNIT

Heavy duty chain drive with steel gears which offer reliability and resistance to wear. Carbon hardened steel cutting knives unaffected by staples and clips.



TURBO BOOST SYSTEM

by pressing the Turbo switch the shredding capacity of the machine is increased by 30%.



COVENIENT REMOVABLE WASTE BIN

for easy empty operations: does not require lifting the cutting head. Equipped with a mechanism to separate shredded paper from plastic shreds.